



# CHRIST EPISCOPAL SCHOOL RENOVATION

109 S WASHINGTON ST., ROCKVILLE, MD 05/16/2018

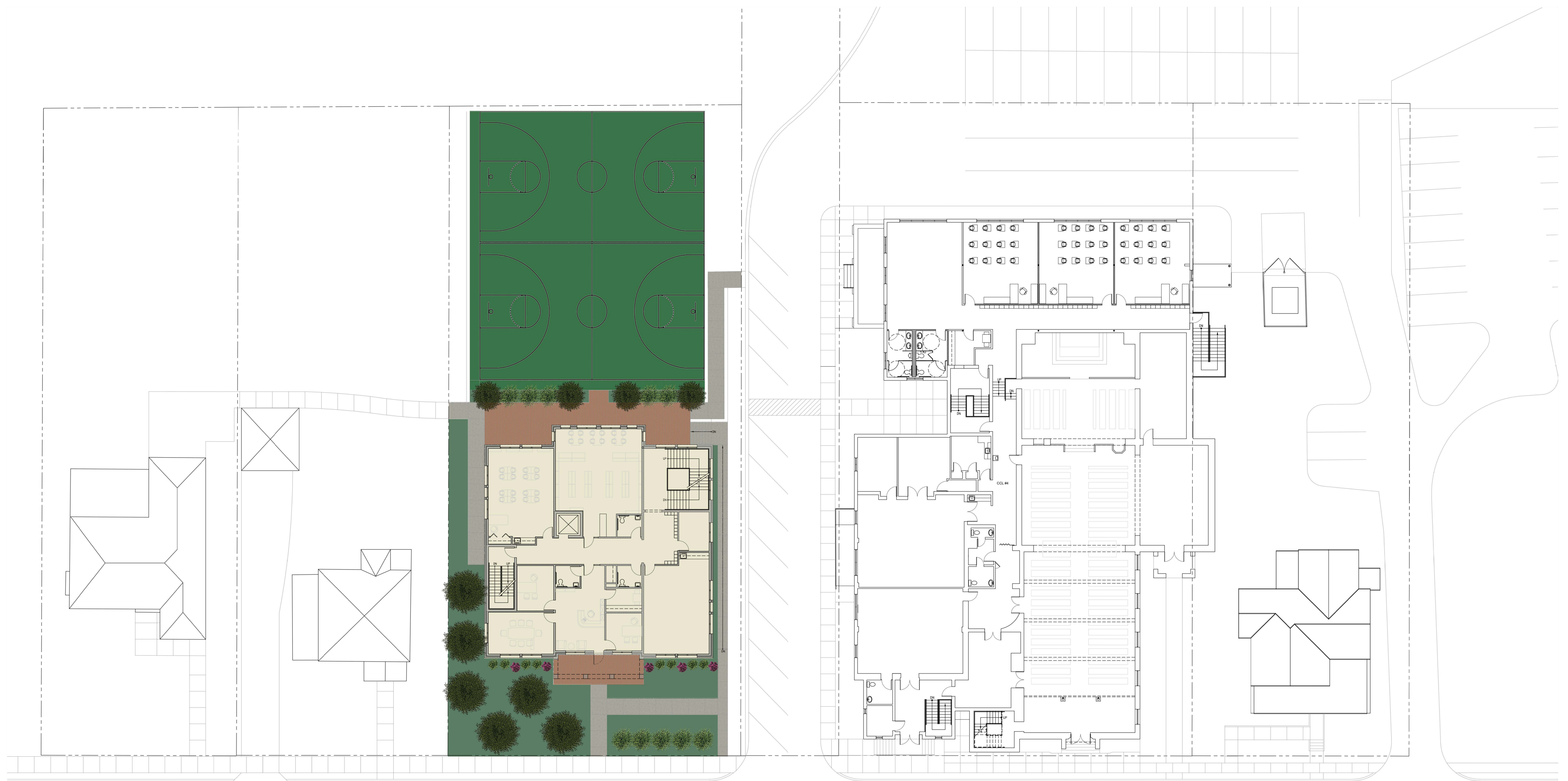
COPYRIGHT 2017, GTM ARCHITECTS, INC.

7735 OLD GEORGETOWN ROAD, SUITE 700, BETHESDA, MD 20814 - TEL: (240) 333-2000 - FAX: (240) 333-2001



GTM ARCHITECTS





1 SITE PLAN  
SCALE: 1/16" = 1'-0"

# CHRIST EPISCOPAL SCHOOL RENOVATION

109 S WASHINGTON ST., ROCKVILLE, MD 05/16/2018

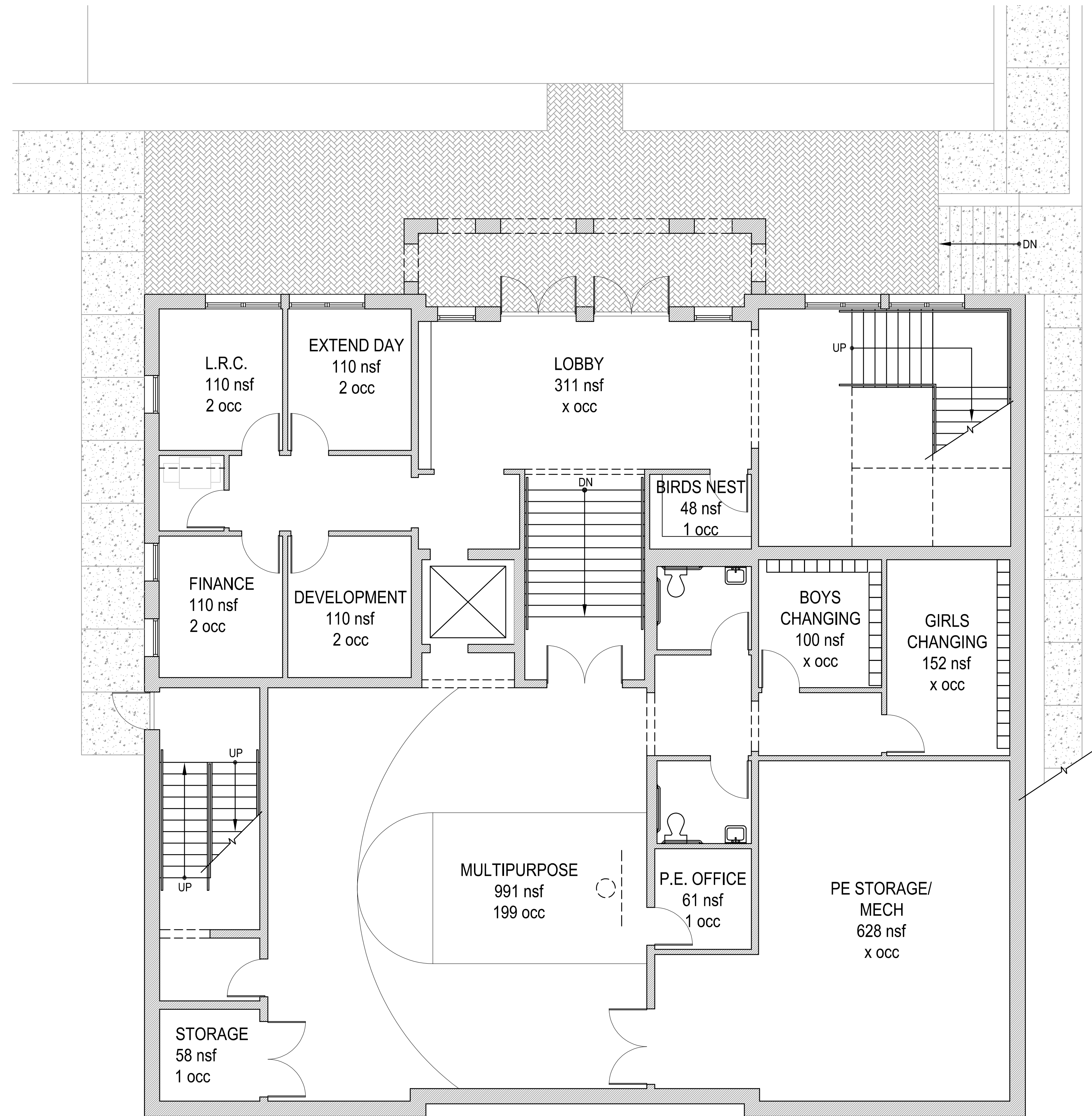
COPYRIGHT 2017, GTM ARCHITECTS, INC.

7735 OLD GEORGETOWN ROAD, SUITE 700, BETHESDA, MD 20814 - TEL: (240) 333-2000 - FAX: (240) 333-2001

GTM

GTM ARCHITECTS



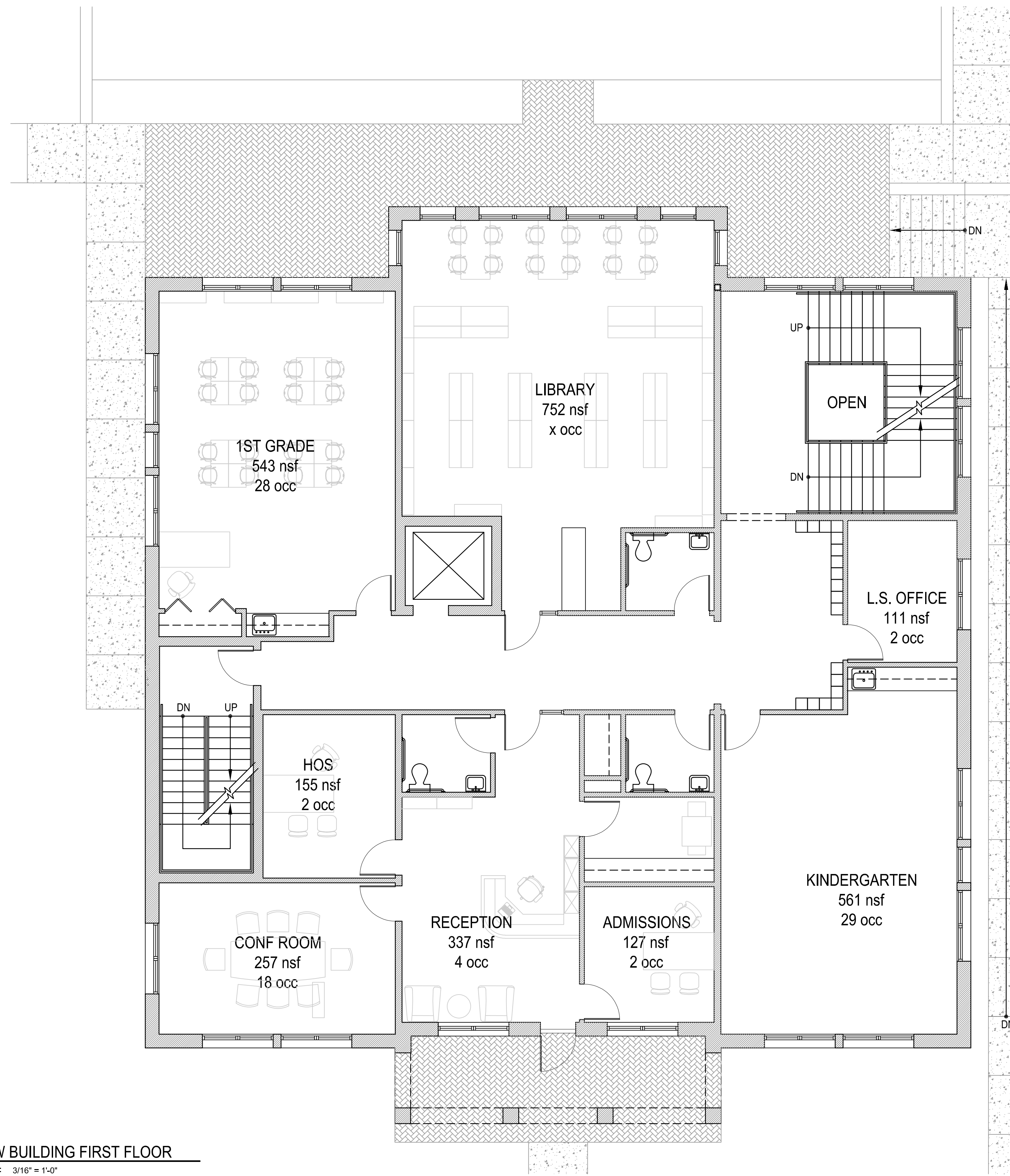


1 NEW BUILDING LOWER LEVEL  
SCALE: 3/16" = 1'-0"

# CHRIST EPISCOPAL SCHOOL RENOVATION







1 NEW BUILDING FIRST FLOOR  
SCALE: 3/16" = 1'-0"

# CHRIST EPISCOPAL SCHOOL RENOVATION





1 NEW BUILDING SECOND FLOOR  
SCALE: 3/16" = 1'-0"

# CHRIST EPISCOPAL SCHOOL RENOVATION

